



# Reading Your Meter ... Made Easy



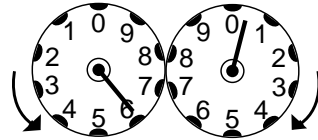
## Reading any dial meter — gas or electric

The dials on your meter work much like a car odometer. The pointer on the far right-hand dial moves from one through nine. When it hits zero, the pointer on the dial to its left moves to one.

### Two basic rules...

There are two basic rules to follow when you read your meter:

*When the pointer is between two numbers...*

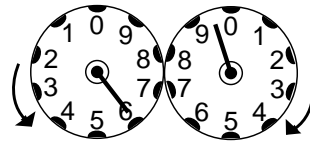


Write 6

Write 0

- If the pointer is positioned between two numbers, **always record the smaller number**. The one exception is if the pointer is between 9 and 0; then you record 9.

*When the pointer is directly on the number...*



Write 5

Write 9

- If the pointer is directly on a number, check the dial to the right. If the dial to the right has not reached or passed zero, record the smaller number for the dial on the left.

As you move from dial to dial, you'll notice that some run clockwise and others counterclockwise. However, the pointer on the face of each dial always moves from zero through nine.

| <input type="checkbox"/> Gas <input type="checkbox"/> Electric |  | Meter Number |  |  |  | Meter Reading Info |
|--|--|--------------|--|--|--|--------------------|
| Meter Reading  |  |              |  |  |  |                    |
| Meter Reading  |  |              |  |  |  |                    |





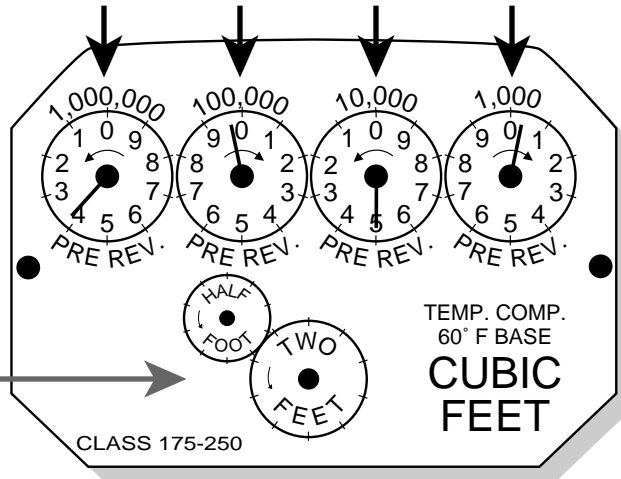
# How to read your residential gas meter

The dials on your gas meter indicate the amount of gas used.

Most residential gas meters have six dials on the front panel. Use the top four dials to

take your meter reading. **The correct reading for the following meter is 3-9-5-0.**

The two dials without numbers are used by MGE to test the meter.



# How to read your residential electric meter

The dials on your electric meter indicate the amount of electricity used.

Most electric meters have five dials. **The meter to the right reads 1-6-0-5-9.**

