

2050
Net-Zero Carbon



Cleaner Energy

Sunshine, Sheep and Sustainable Ecosystems

Several of MGE's local solar facilities provide more than renewable energy to power our households and businesses. They also support local agriculture and provide pollinator habitat.

Where sheep and solar share the land

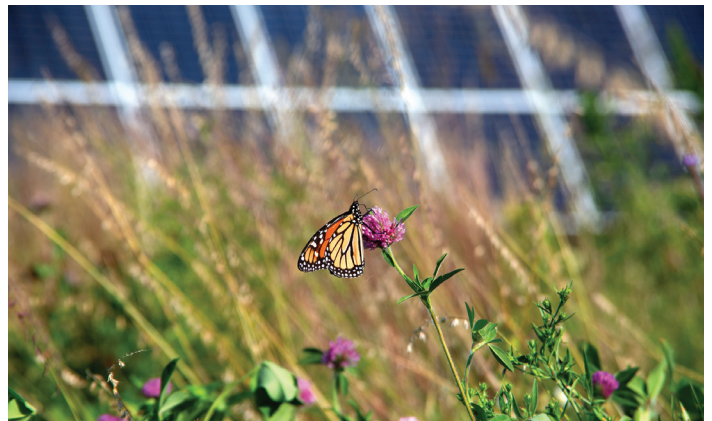
Each growing season, sheep from Fitchburg-based Wiscovery Farm help manage vegetation at MGE's nearby solar fields. Tyto Solar in Fitchburg was the first MGE project to introduce solar grazing in 2024. In 2026, the sheep will return to Tyto for their third season. They also will graze at MGE's Strix Solar in Fitchburg and Hermsdorf Solar Fields in Madison this summer.

The sheep provide natural, low-impact vegetation control to keep the grass and brush from shading the solar panels, which helps reduce the need for mowing powered by fossil fuels. It's an example of agrivoltaics, or dual-use solar, which is the practice of using land for both renewable energy and agriculture.

Butterflies, bees and a thriving ecosystem

Pollinator habitats are shrinking nationwide, reducing food sources and nesting areas for bees, butterflies and other insects vital to pollinating plants and supporting food production.

MGE partners with vegetation consultants to create thriving



The solar facilities host native plantings to support pollinators like monarch butterflies.

pollinator habitats by choosing plant mixes suited to Wisconsin's climate. A mature habitat typically develops in three to five years.

The perennial ground cover can help preserve farmland by providing a recovery period for the soil while also helping to improve water quality by reducing phosphorus runoff, which can impact nearby waterways.

MGE's O'Brien Solar Fields, Morey Field Solar and portions of the Hermsdorf Solar Fields and Dane County Airport Solar are planted with native species that support pollinators.



Community Grid

A Simple Way to Go Solar—Together

Interested in powering your home with clean energy? MGE's Shared Solar - Strix is a way to support locally generated solar energy and reduce your carbon footprint—without putting anything on your roof.

Shared Solar - Strix is an optional community solar program for eligible MGE customers who wish to reduce their environmental footprint associated with their electric use. You pay a minimal up-front fee and then a fixed energy rate to subscribe to shares of solar energy generated by MGE's Strix Solar array in Fitchburg.

Shared Solar: flexible, accessible clean energy

- Moving? If your new space is still in the MGE service area, you can take your shares with you.
- Rent or live in a condo? No problem—you don't need to be a homeowner to participate.
- Want solar without the maintenance? With Shared Solar, you don't need to install or maintain your own system. MGE handles the operation and upkeep of the local solar array.

Learn more and enroll at mge.com/sharesolar.

Visit mge.com/e2050news to learn more.



Beat the Heat with High-Efficiency Cooling This Summer

If you're shopping for a new air conditioner (AC) unit this season, we've got a few things to consider to help make an energy-efficient choice, along with tips to keep your unit running smoothly for years to come.

Choose wisely

Whether you need a window unit or a central air system, air conditioners today are more efficient than ever. Here are some things to consider:

- 1. Right size for your space.** A unit that is too large will cool the air but won't adequately remove humidity. A unit that's too small will be unable to keep up with the cooling demand.
- 2. Program your temperature settings.** Even basic window units come with digital displays, so you can set an exact temperature and schedule your AC to turn off when you'll be out and back on when you're coming home.
- 3. Take advantage of the energy-saving setting.** This setting allows the unit to turn off the compressor and the fan once your space has cooled, conserving energy.
- 4. Look for high EER and SEER ratings.** EER stands for "energy efficiency rating," and SEER stands for "seasonal energy efficiency rating."
- 5. Look for the ENERGY STAR® rating.** This ensures the unit meets or exceeds efficiency standards.
- 6. Consider an air source heat pump (ASHP)** instead of an AC unit for increased efficiency. An ASHP can heat and cool and is the only cooling equipment that has rebates available for its installation.

Use AC efficiently

When it comes to energy efficiency, the way your household uses air conditioning is just as important as the type of unit you choose. These tips will help make your AC as efficient as possible:

- 1. Adjust the temperature settings.** When you're home or sleeping, set the temperature to 78°. When you're away, program your AC to 85° to help manage cooling costs. At night, consider turning the AC off and opening the windows.
- 2. Use ceiling fans.** Fans circulate the air more efficiently than an air conditioner can alone, and they use less energy. Set the correct ceiling fan direction with air conditioning—counterclockwise to send the air down—and turn it off when you leave the room.
- 3. Insulate and seal** any point where an AC unit (or any part of a larger AC system) enters your home.
- 4. Clean window AC units regularly.** Wipe down the vents and rinse the filter monthly to keep things running smoothly and efficiently.
- 5. Change your filter** if you have central air conditioning. A clean filter will allow the unit to process air more efficiently while keeping up with demand.

Increasing Access to EV Charging

Transportation remains the leading contributor to greenhouse gas emissions in the United States. The electrification of transportation is a key strategy for reducing carbon emissions.

MGE is working to build a broader, more accessible fast-charging network for electric vehicle (EV) drivers across our service area by partnering with local businesses and municipalities to install and operate charging stations at key locations where access is limited.

Through these partnerships, new fast-charging stations are now available at the City of Madison's Yahara Hills Golf Course. Chargers are expected to become operational this spring at two Summit Credit Union locations, one in Westport and another in Fitchburg. Additional sites are under construction, including at The Center for Black Excellence and Culture and at Madison Memorial High School. Other sites in the Madison area are expected online later this year.

Reduce Your Footprint with MGE

MGE continues to grow our use of carbon-free generation to meet our community's energy needs as we target net-zero carbon electricity by 2050. We offer several optional programs for customers who want to go even further today to reduce their environmental footprint.

Green Power Tomorrow: A flexible, affordable way to offset your greenhouse gas emissions from your electricity usage. It's only \$0.01 more per kilowatt-hour. Learn more and enroll at mge.com/gpt.

Renewable Flat Bill: Support renewable energy with a fixed monthly bill for 12 months. Learn more at mge.com/rfb.

Shared Solar - Strix: MGE's community solar program is an easy, hassle-free way to go solar. Learn more in this newsletter and enroll at mge.com/sharedsolar.

Renewable Natural Gas: An easy way to offset your greenhouse gas emissions from your natural gas usage. You pay an incremental charge to participate. Learn more and enroll at mge.com/rng.