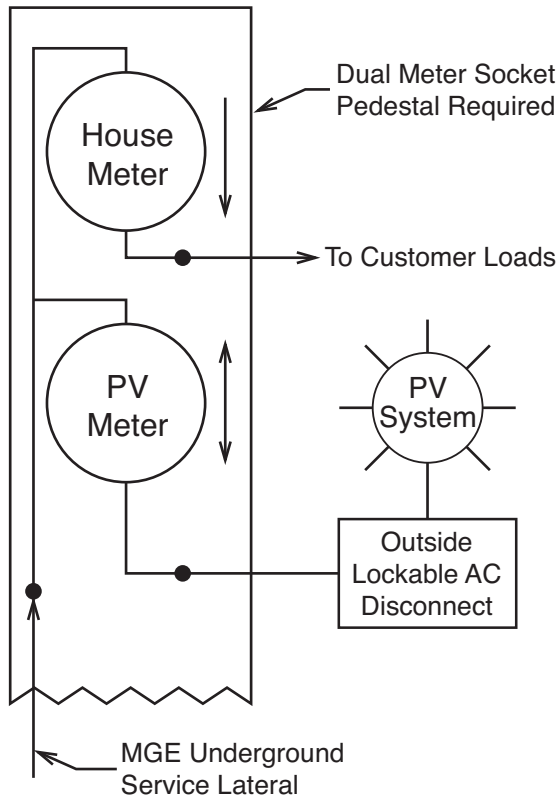


Clean Power Partner Interconnection Metering Options (Rate Class Pg-4)

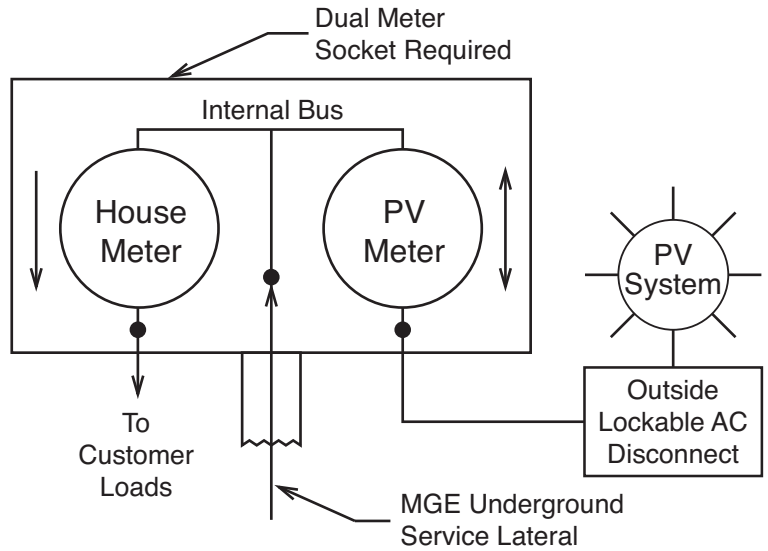


Residential Service

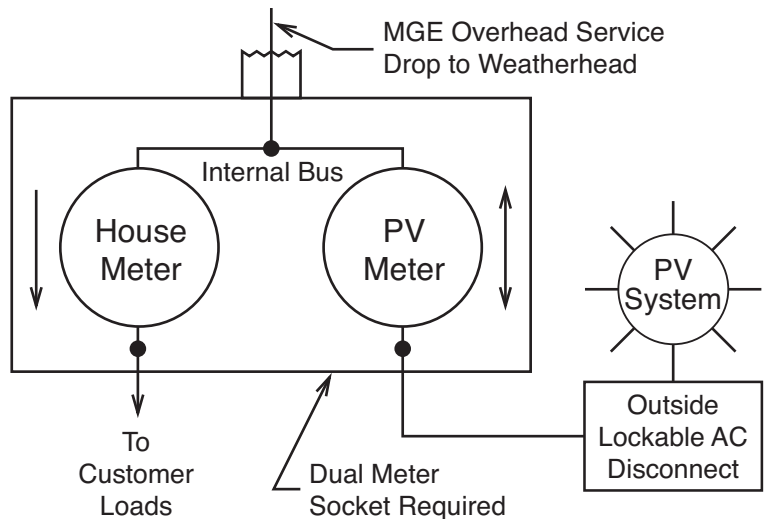
Underground source with pedestal socket



Underground source with horizontal meter socket



Overhead source with horizontal meter socket



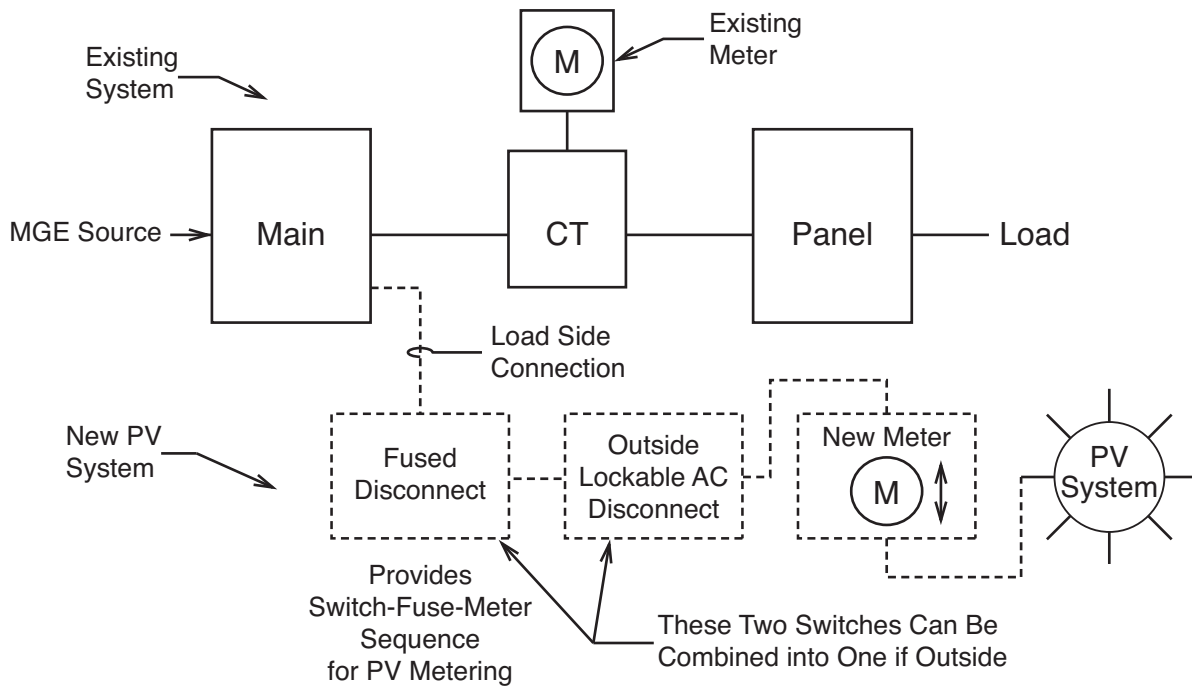
Notes:

- 1) Installing the dual meter socket will require a utility outage

(continued on reverse)

Commercial Service

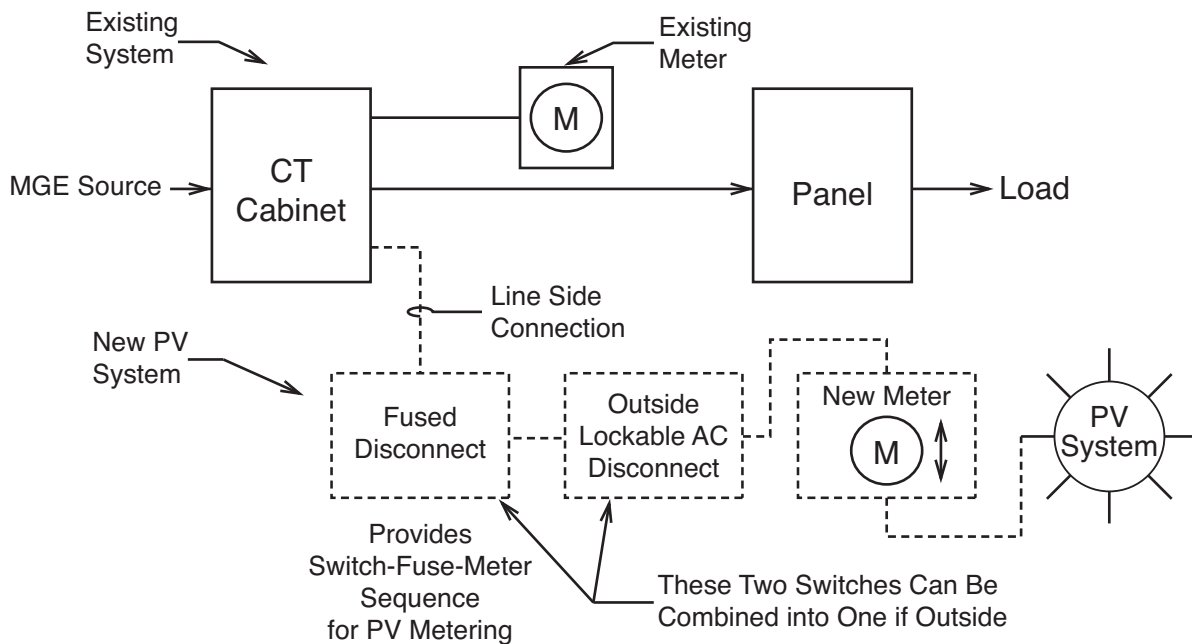
With existing cold sequence metering (switch-fuse-meter)



Notes:

- 1) New PV meter to be near existing meter
- 2) MGE will provide a site visit with PV installer to detail interconnection point in existing main

With existing hot sequence metering (meter-switch-fuse)



Notes:

- 1) Connection at CT cabinet will require a utility outage
- 2) New PV meter to be near existing meter
- 3) MGE will provide a site visit with PV installer to detail interconnection point in existing main
- 4) Six switch rule may apply