



## Vehicle Technologies Program

### North American PHEV Demonstration

Monthly report for:

Vehicle ID: Madison 1

Reporting Period: October 2008

Date range of data received:

10/1/2008 to 10/31/2008

Number of days when the vehicle was driven: 30

#### All Trips Combined

Overall gasoline fuel economy (mpg)	60
Total number of trips	184
Total distance traveled (mi)	1386
Trips in Charge Depleting (CD) mode *	
Gasoline fuel economy (mpg)	84
Number of trips	100
Percent of trips city / highway	86.00% / 14.00%
Distance traveled (mi)	505
Percent of total distance traveled	36.42%

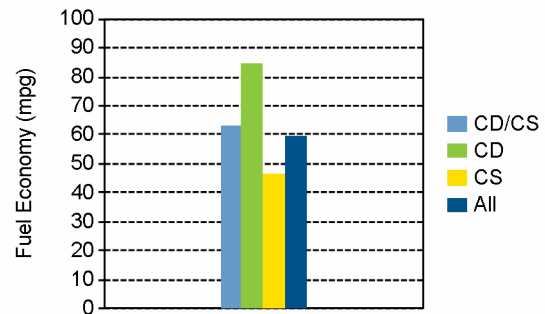
#### Trips in combined Charge Depleting and Charge Sustaining (CD/CS) modes\*\*

Gasoline fuel economy (mpg)	63
Number of trips	23
Percent of trips city / highway	65.20% / 34.80%
Distance traveled (mi)	320
Percent of total distance traveled	23.08%

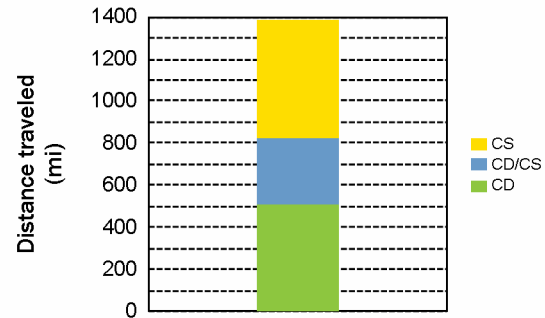
#### Trips in Charge Sustaining (CS) mode\*\*\*

Gasoline fuel economy (mpg)	47
Number of trips	61
Percent of trips city / highway	67.20% / 32.80%
Distance traveled (mi)	561
Percent of total distance traveled	40.51%
Number of trips when the plug-in battery pack was turned off^	0
Distance traveled with plug-in battery pack turned off (mi)^	0

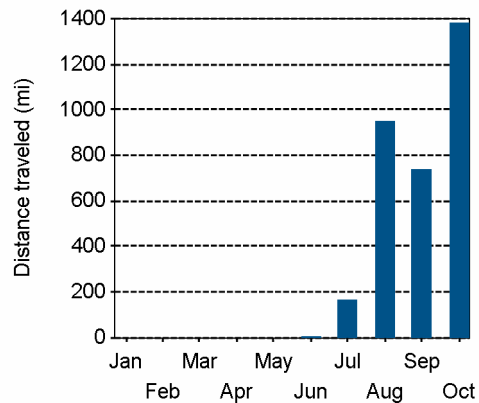
Gasoline Fuel Economy By Trip Type



Distance Traveled By Trip Type



Miles Logged by Month This Year



\* Trips when the plug-in battery pack charge is depleted to propel the vehicle throughout entire trip

\*\* Trips when the plug-in battery pack is depleted to propel the vehicle for a portion of the trip, but is fully depleted prior to the end of the trip

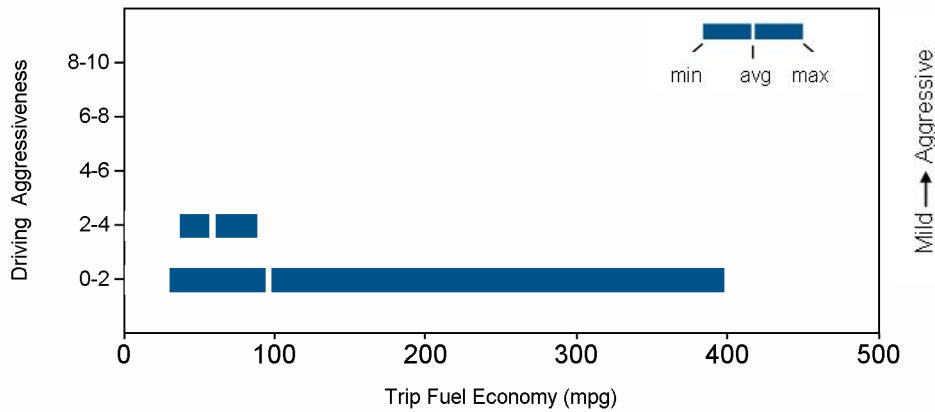
\*\*\* Trips when the plug-in battery pack is not used to propel the vehicle - either the plug-in battery is fully depleted before the beginning of the trip, or the plug-in battery pack is turned off

^ "Number of trips with plug-in battery pack turned off" is a subset of number of trips in combined CD/CS and CS mode

^^ "Distance traveled with plug-in battery pack turned off" is a subset of distance traveled in combined CD/CD and CS modes

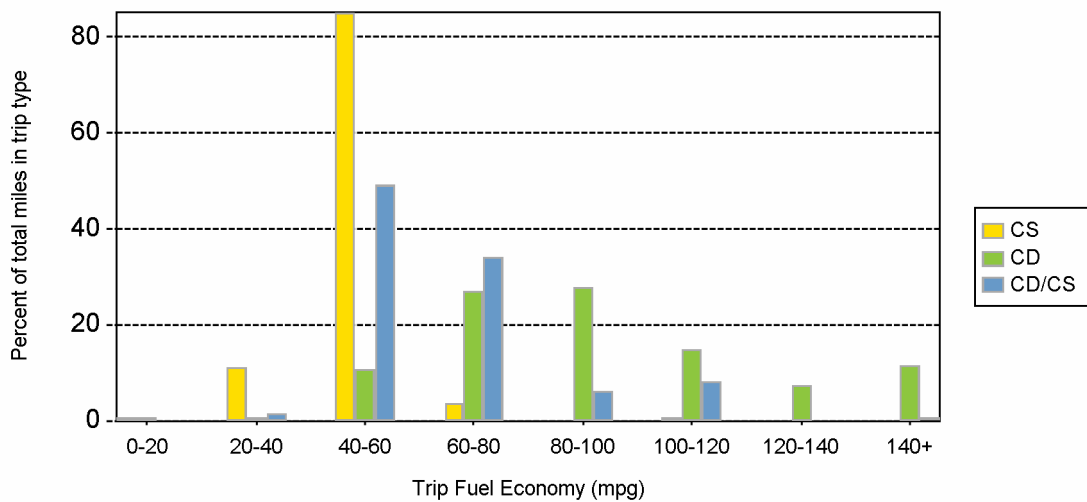
Trips in Charge Depleting (CD) mode		
	City	Highway
Gasoline fuel economy (mpg)	87	78
Percent of miles in electric-only mode	38.00%	15.00%
Average trip aggressiveness (on scale 0 - 10)	1.1	1.8
Average trip distance (mi)	4.1	11.0
Trips in combined Charge Depleting and Charge Sustaining (CD/CS) modes		
Gasoline fuel economy (mpg)	67	59
Percent of miles in electric-only mode	36.00%	6.00%
Average trip aggressiveness (on scale 0 - 10)	1.2	1.5
Average trip distance (mi)	9.9	21.4
Trips in Charge Sustaining (CS) mode		
Gasoline fuel economy (mpg)	44	49
Percent of miles in electric-only mode	23.00%	8.00%
Average trip aggressiveness (on scale 0 - 10)	1.3	1.5
Average trip distance (mi)	5.1	17.6
Average ambient temperature this month:	53 deg F	

### Effect Of Driving Aggressiveness on Fuel Economy This Month



Aggressiveness factor is based on accelerator pedal position. The more time spent during a trip at higher accelerator pedal position, the higher the trip aggressiveness. The above plot excludes trips with distance less than 1 mile.

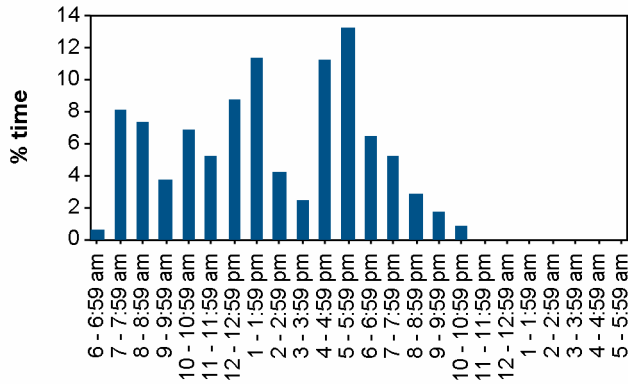
### Trip Fuel Economy Distribution By Trip Type This Month



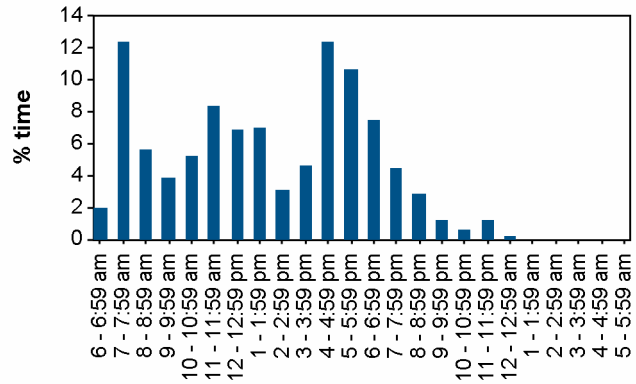
## Plug-in charging

Number of charging events	41
Average number of charging events per day when vehicle driven	1.4
Average number of trips between charging events	4.5
Average duration of charging event (hr)*	6.0
Average energy per charging event (AC kWh)	3.0
Total charging energy (AC kWh)	125.0

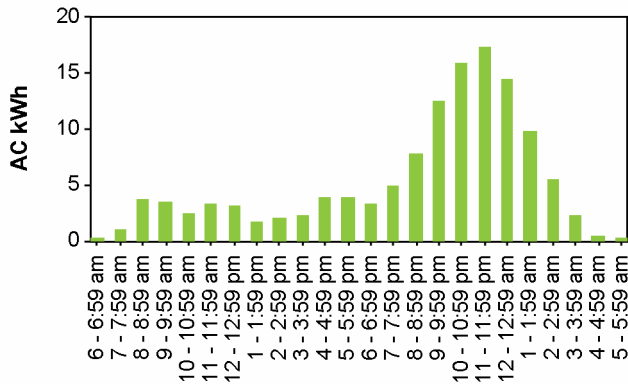
### Time of Day When Driving - This Month



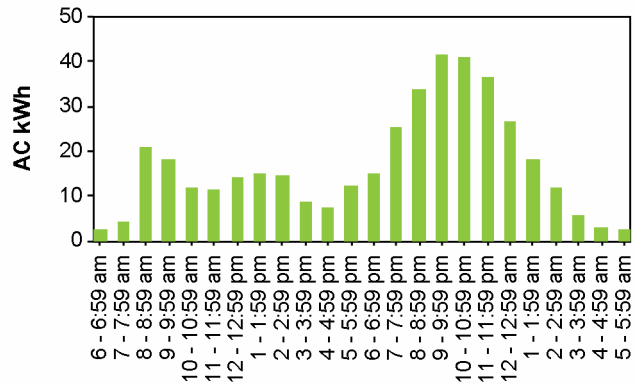
### Time of Day When Driving - Lifetime



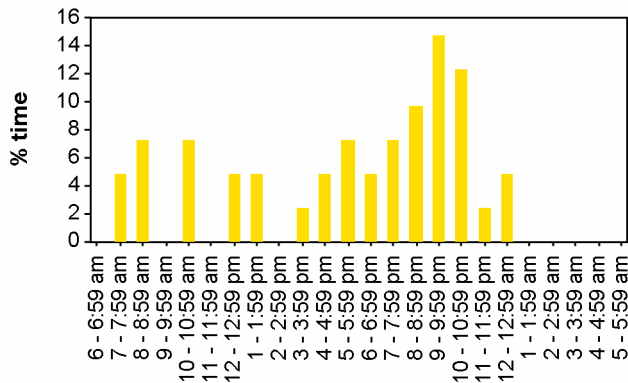
### Time of Day When Charging - This Month



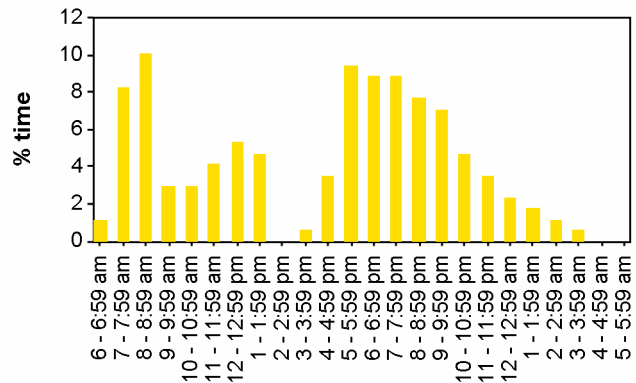
### Time of Day When Charging - Lifetime



### Time at the Start of Charging Events - This Month



### Time at the Start of Charging Events - Lifetime



\*Average duration of charging event is the average length of time per charging event when the vehicle was plugged into the electrical grid. Electrical energy was not necessarily drawn during the entire period when the vehicle was plugged in.