

# MGE solar projects

Solar systems can heat water or convert sunlight into electricity. MGE owns and operates several solar systems and monitors still others to study their economic benefits and technical performance.

We are committed to helping teach area students about renewable energy technologies. That's why MGE Foundation funded solar photovoltaic (PV) array installations for each of the 10 high schools in our electric service area.

We are monitoring all of the schools and several of our projects in the community and sharing that live data on our Web site. These projects give us a better understanding of which equipment and mounting configurations work best in our climate and conditions. We are learning how we can serve our customers with clean energy from the sun.

For more information and view live data, visit [mge.com/solar](http://mge.com/solar). Or call MGE's Home Energy Line at 252-7117.

## Solar Water Heating System



### City of Madison Fire Station No. 7

- Three-panel array
- Manufactured by Alternate Energy Technologies, LLC
- System installed by Seventh Generation Energy Systems
- Monitoring equipment installed by H&H Electric
- Live data reporting will show production only when occupants use hot water

## Solar Photovoltaic Systems



### Bike Path Lighting

- One of the largest solar lighting installations in the U.S.
- 37 SonnelITER lighting fixtures
- 9.25 kilowatt (kW) total generating capacity
- Manufactured by Se'lux
- Battery capacity to run lights for five nights without recharge



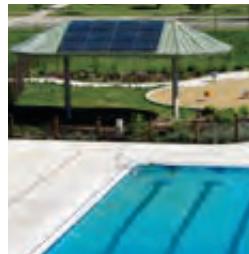
### Dane County Henry Vilas Zoo

- Dual-axis tracking array
- 1.2-kW DC, 1,950 kWh per year
- Manufactured by ASE America
- Installed by H&H Electric



### Dane County Arena

- 16-panel array
- 4.8-kilowatt (kW) DC, 5,612 kilowatt-hours (kWh) per year
- Manufactured by ASE America
- Installed by Great Northern Solar and H&H Electric



### Goodman Pool

- 12-module array
- 2.1 kW DC, 2,600 kWh per year
- Manufactured by Kyocera
- Structure installed by Joe Daniels Construction
- PVs installed by H&H Electric

(continued on reverse side)

## Solar Photovoltaic Systems (continued)



### Lussier Family Heritage Center

- Two-panel array with dual-axis tracking
- 1.32-kW DC, 2,150 kWh per year
- Live data reporting
- Manufactured by Sharp USA
- Installed by H&H Electric



### UW-Madison Arboretum McKay Center Addition

- Atlantis Sunslate concrete/fiber slate roof building integrated PV system
- 8.54-kW DC, 6,000 kWh per year
- Live data reporting
- Manufactured by Atlantis Energy Systems
- Installed by Great Northern Solar and Great Lakes Electrical



### Society of Friends Meeting House

- 30 metal standing-seam roof panels
- 3.84-kW DC, 3,637 kWh per year
- Manufactured by United Solar
- Installed by Innovative Power Systems and H&H Electric



### Wisconsin State Capitol

- 48 Evergreen modules
- 9.84 kW total generating capacity
- 11,776 kWh estimated annual energy production
- Installed by H&H Solar Electric



### Solar Parking Canopy

- 66 modules
- 8.5-kW DC, 9,300 kWh per year
- Live data reporting
- Manufactured by United Solar
- Installed by H&H Electric

## MGE operates and maintains the following solar projects



### Solar in Schools

- 10 PV arrays, one on each high school in our electric service area
- 2.4-kW DC each
- Live data reporting for each site
- Four different manufacturers' systems used
- Installed by H&H Electric

