



*The Energy Fund has helped thousands of area households get through a cold winter.*

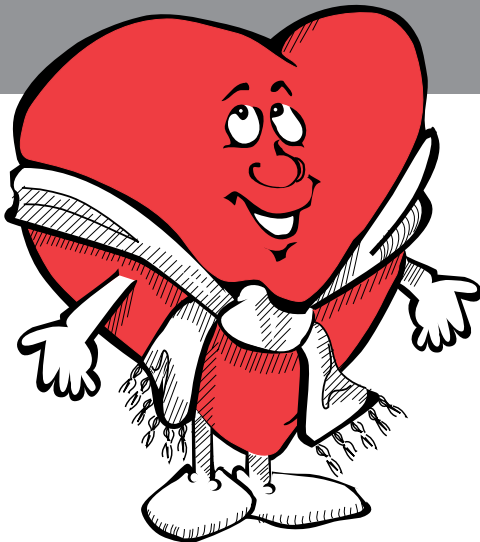
**Support the Energy Fund.**

**Warm hands, warm hearts.**



**your community energy company**

**Support the Energy Fund.**



**Warm hands,  
warm hearts.**



**Make our harsh winters warmer for  
people in need.**

**Please use the form inside to make your  
tax-deductible donation.**

# Help local people facing tough financial situations.

With your support, needy area families and individuals will have money to pay for their heat. One hundred percent (100%) of your donation to the Energy Fund goes directly to help people in our area.



Individuals and families—crisis victims, the elderly and disabled—are helped by the Energy Fund.

## What is the Energy Fund?

- Donations come from MGE customers, shareholders and employees.
- MGE shareholders pay the administrative costs of this fund. A nonprofit agency distributes the money.
- Contributors' names are kept confidential.

## Who does the Energy Fund help?

Families and individuals who, because of unfortunate events, find it impossible to cover basic living costs. Their difficulties may be caused by medical bills, job loss or other emergencies. They may work for low hourly rates or live on a fixed income.

## How can you help?

Please make a monthly or a one-time donation by doing one of the following:

- Complete and return the coupon below with your bill payment, or
- Send the completed coupon to:  
**Madison Gas and Electric Co.**  
**P.O. Box 1231**  
**Madison, WI 53701-1231**

or,

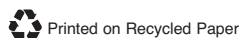
- Go to [www.mge.com/energyfund](http://www.mge.com/energyfund) to set up a monthly donation.

## Need more information?

- For more information or to apply for an Energy Fund grant, call 252-7272 or 1-800-245-1125.
- Visit [www.mge.com/energyfund](http://www.mge.com/energyfund)

*Thanks*

MGE00064 09/27/2005



## Energy Fund

**RETURN THIS PORTION**

40-242-810

Your donation to the Energy Fund is tax-deductible.

Name \_\_\_\_\_

Address \_\_\_\_\_ City \_\_\_\_\_ ZIP \_\_\_\_\_

### One-Time Donation

You may pay your bill and make a donation with just one check.

My one-time donation to the fund is \$ \_\_\_\_\_  
My energy bill payment is + \$ \_\_\_\_\_  
Enclosed is a check for a total of = \$ \_\_\_\_\_

### Monthly Donation

Please add this amount to my energy bill each month. (The amount will appear on your next bill and continue to appear until you notify us of a change.)

\$2    \$5    \$10    \$15    \$ \_\_\_\_\_